

# The Mass General Cancer Early Detection & Diagnostics Clinic : A Collaboration with Home Base

Lecia V. Sequist, MD, MPH

The Landry Family Professor of Medicine, Harvard Medical School

Program Director, Cancer Early Detection & Diagnostics, Mass General Cancer Center

# DISCLOSURES

---

Dr. Sequist receives institutional research grant funding from AstraZeneca, Delfi Diagnostics and Novartis.



# Cancer in Military Personnel

PBS NEWS WEEKEND

## Study finds higher cancer rates among U.S. military airmen and ground crews

Mar 25, 2023 5:40 PM EDT

### Alarming breast cancer rates among troops reported

Jon R. Anderson, Military Times

Published 12:10 p.m. ET Oct. 2, 2012 | Updated 12:26 p.m. ET Oct. 2, 2012

June 27, 2023 | 3 min read

SAVE

### Agent Orange exposure linked to increased risk for bladder cancer among Vietnam veterans

Compared to the general population, **military servicemembers are 25 percent more likely to receive a lung cancer diagnosis.** In addition to carrying a higher risk, the survival rate among veterans has been historically lower than the general population.



25%

#### Exposure

Agent Orange

Radiation

Asbestos

Burn Pits

#### Associated Cancers

Prostate Cancer, Bladder Cancer, Lung Cancer

Breast Cancer, Colon Cancer, Lung Cancer, Bladder Cancer, Liver Cancer

Mesothelioma, Lung Cancer

Lung Cancer, Melanoma, Kidney Cancer, Brain Cancer

**1 IN 5 VETERANS**  
WILL GET **PROSTATE CANCER**  
DURING THEIR **LIFETIME.**

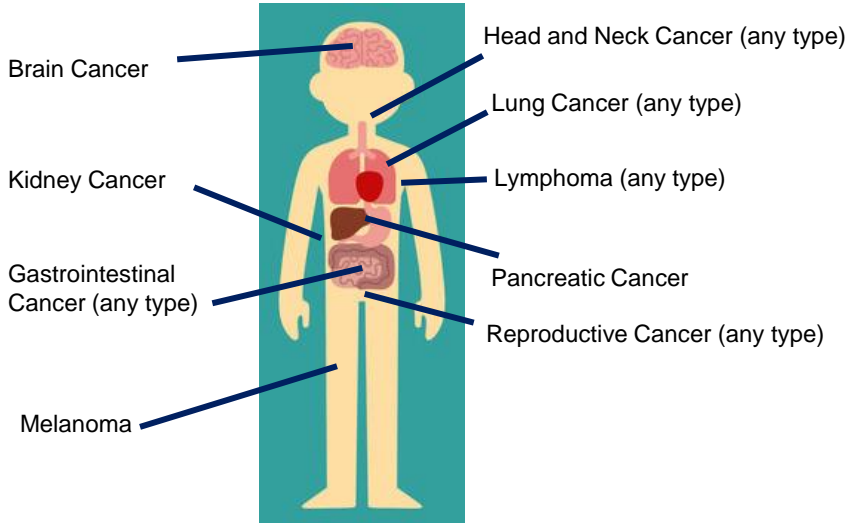
Research shows increased skin cancer risk among U.S. military members

### HAZARD LINE: ARE TOXIC MILITARY BURN PITS CAUSING HIGHER RATES OF BRAIN CANCER IN VETERANS?

ASAVARI GOWDA | APRIL 15, 2022 | WORLD NEWS



# Is Cancer a Hidden Wound of War?



# Early Detection & Diagnostic Clinic

Cancer Risk  
Assessment

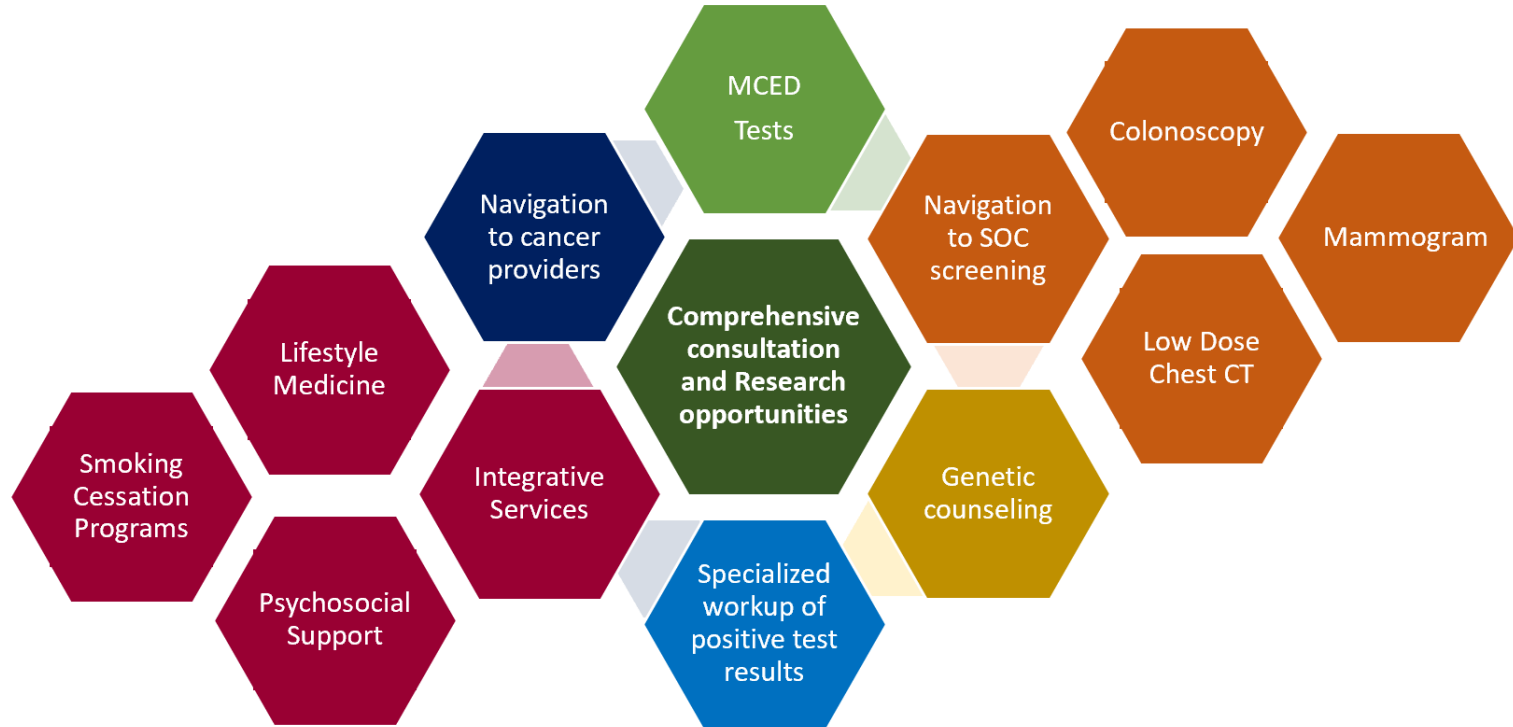
Personalized cancer risk  
assessment to direct cancer  
screening recommendations:  
Family and medical history,  
occupational exposures,  
research

Cancer  
Suspicion

Diagnostic Work up of  
radiographic or lab  
abnormality, or symptoms that  
suggest cancer

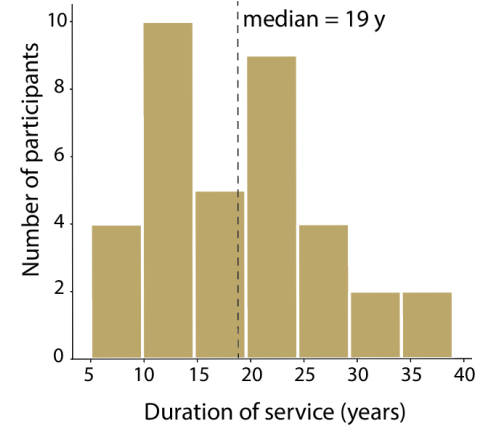
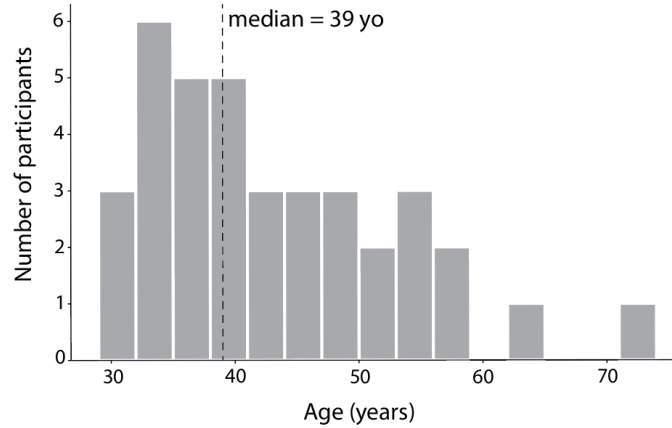
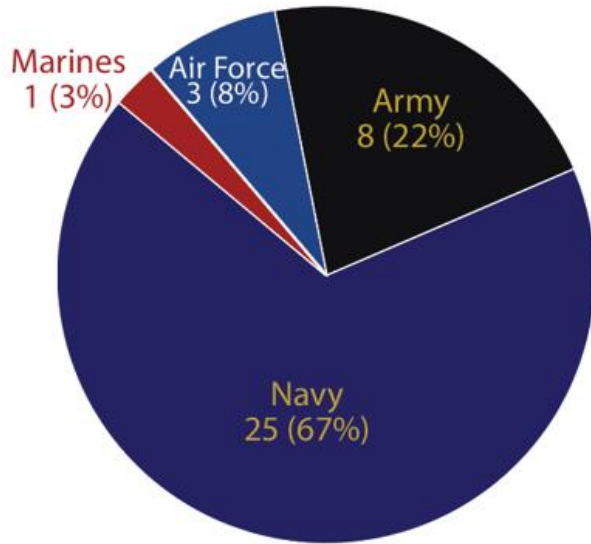


# What services are offered at EDDx?



# EDDx + Home Base: 37 pts July + Aug 2024

Distribution of military branches



20 (54%) Active Duty  
17 (46%) Veterans



# EDDx + Home Base

## Top 3 exposure concerns:

Inhaled substances (air quality, burn pits)

Toxins (lead, blast materials, solvents)

Radiofrequency signals

## Classic Cancer Risk Factors:

### Substances:

5 (14%) have smoked cigarettes.

9 (24%) have used smokeless tobacco

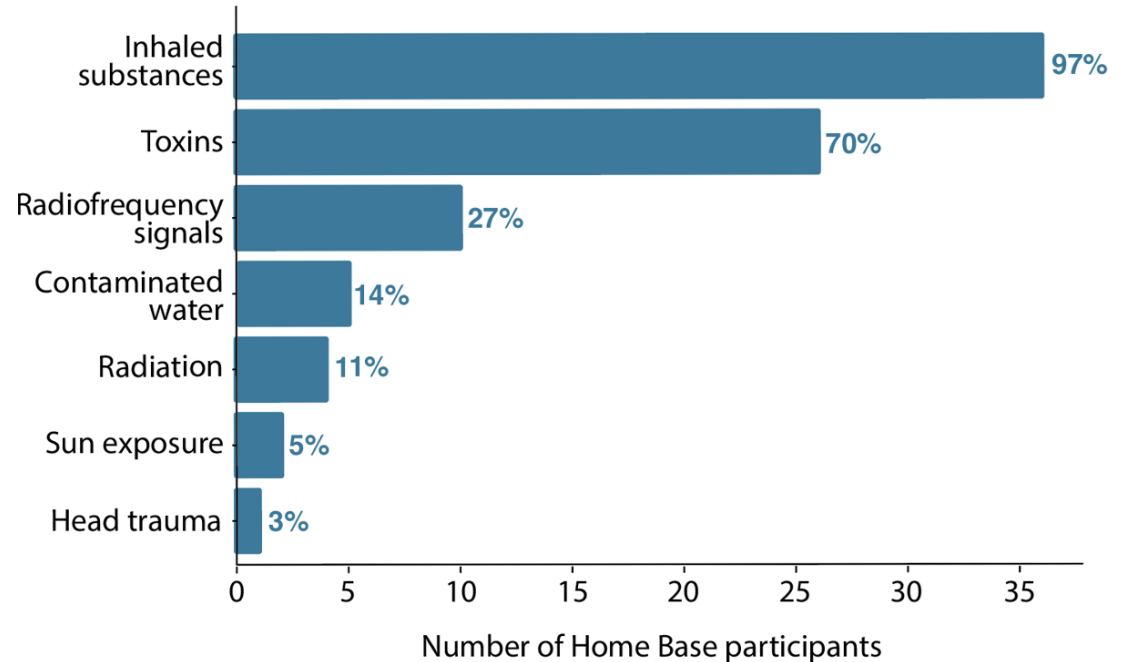
7 (19%) consume 7+ alcoholic drinks/week

### Family history of cancer:

14 (38%) have  $\geq 1$  first-degree relative

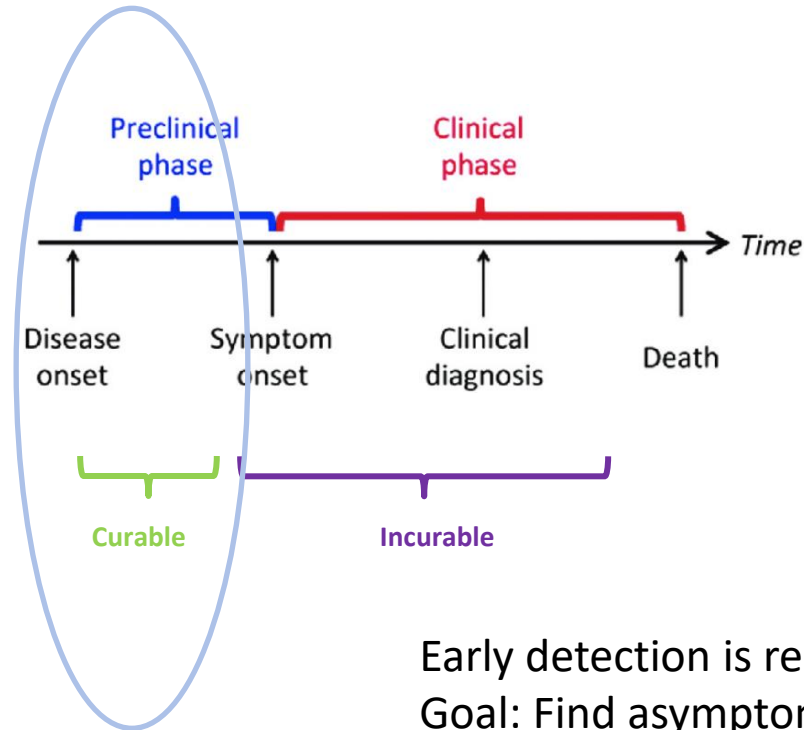
16 (43%) have  $\geq 2$  second-degree relative

## Exposure themes





# What do we mean by early detection?



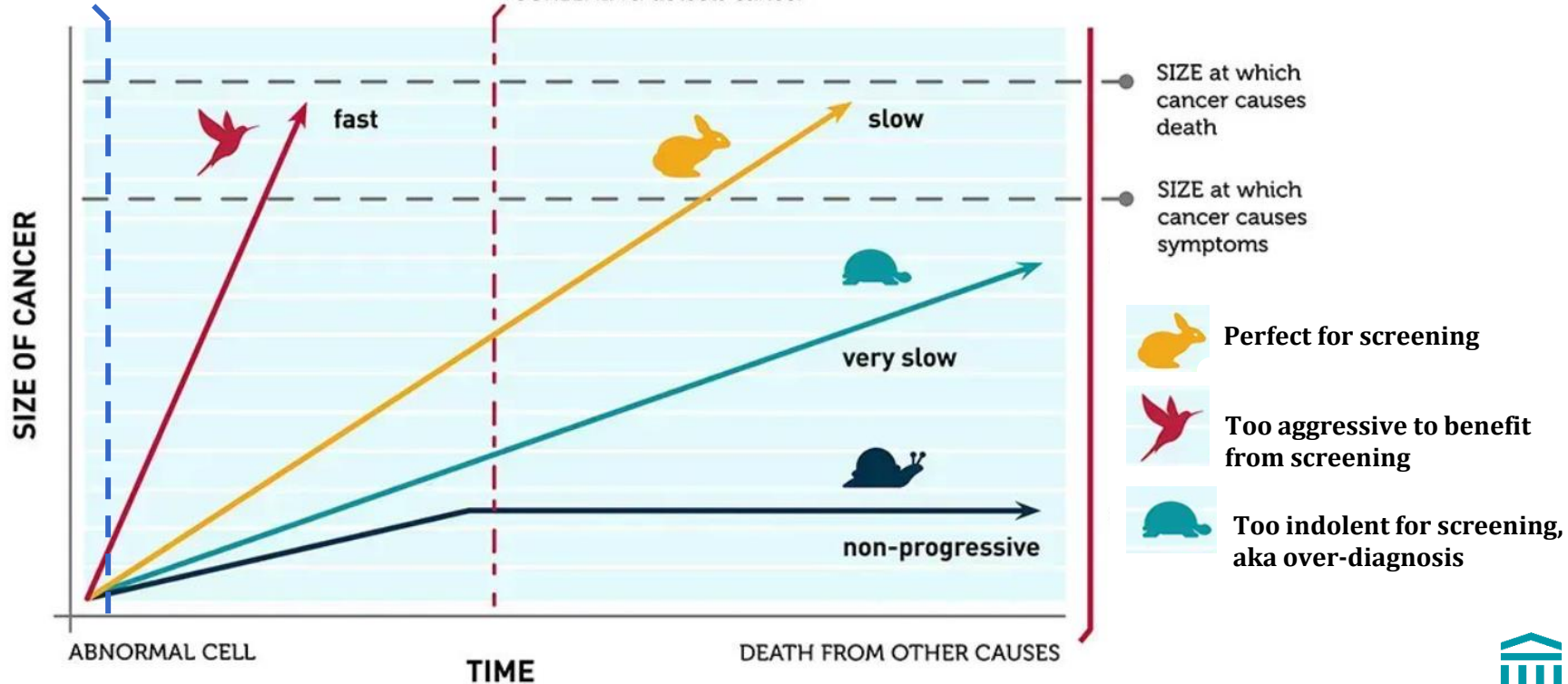
Early detection is really early **STAGE** detection.  
Goal: Find asymptomatic cancers  
when may be cured by treatment



# Screen Interval and Growth Rate

SCREENING unable to detect cancer here

SCREENING detects cancer



# Risk of the Screened Population



Novel test to detect cancer:  
95 % Sensitivity  
95 % Specificity

But the clinical utility of this great test depends on the rate (prevalence) of the disease in the tested population.....

<b>Prevalence</b>	<b>20 %</b>	<b>5 %</b>	<b>1 %</b>	<b>0.1 %</b>
<b>Test positive predictive value</b>	<b>83 %</b>	<b>50 %</b>	<b>16 %</b>	<b>2 %</b>

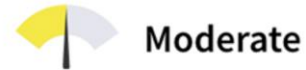


# Our primary research question: RISK

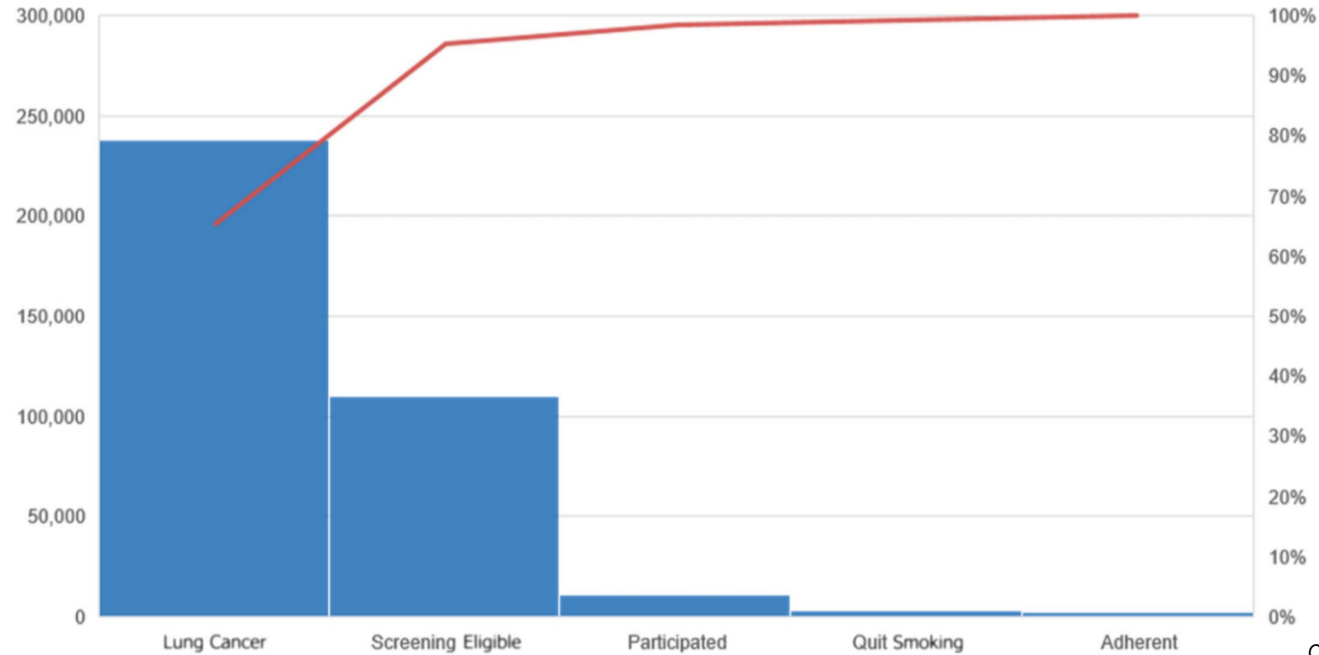


# Our Goals for Collaboration:

- Develop a SOF cohort to understand the unique cancer risks in this population
- Provide education, reassurance and guidance for joint HB + EDDx patients
- Develop and test novel tools to predict risk and thereby personalize screening recommendations



# The problem of the grasp and reach of LCS



Osarogiagbon et al, ASCO Ed Book 2023

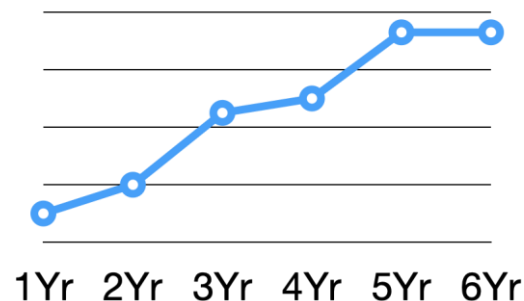
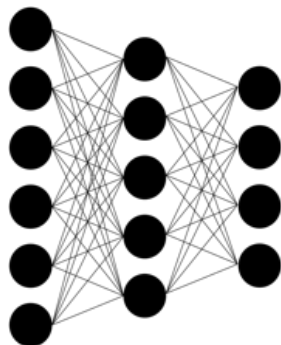
# The problem of the grasp and reach of LCS



Osarogiagbon et al, ASCO Ed Book 2023

# Sybil: Individualized Future Cancer Risk

> 44K LDCT exams from  
15K subjects in NLST trial



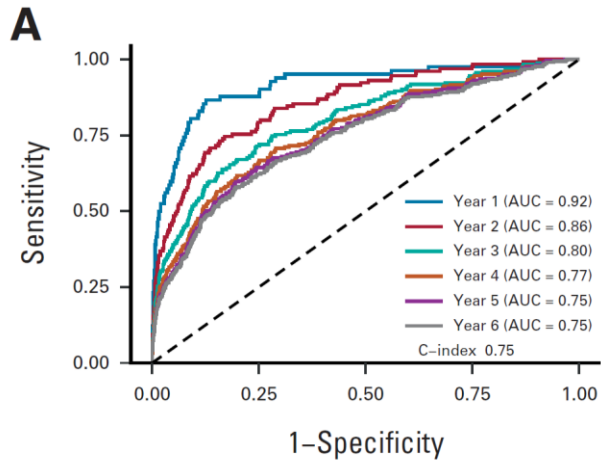
## Key Advantages

- No image annotation
- No clinical data needed
- Instant readouts
- Multi-year future risk stratification from single CT
- Code is open source

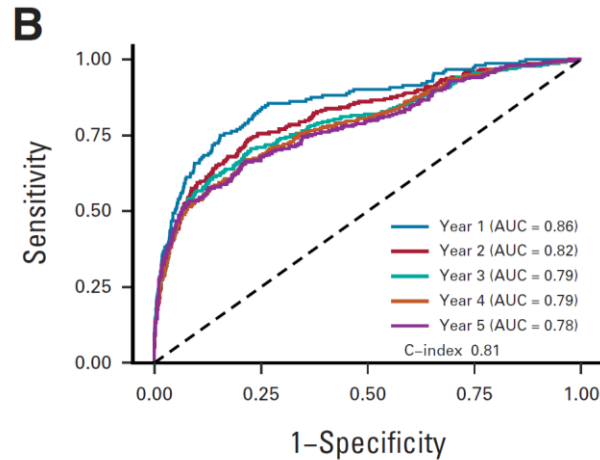




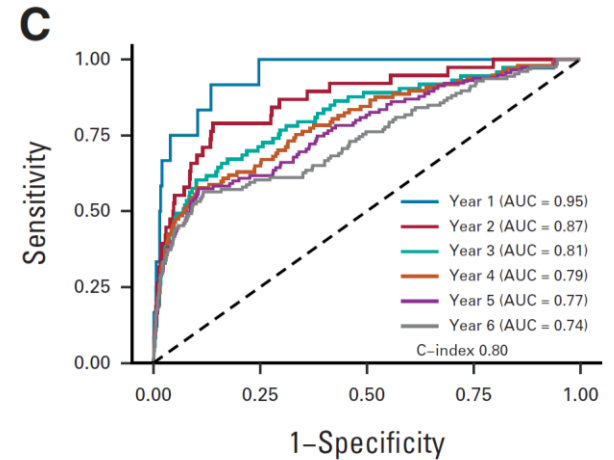
# Sybil Performance



NLST, n=6,282



MGH, n=8,862



CGMH, n= 12,280



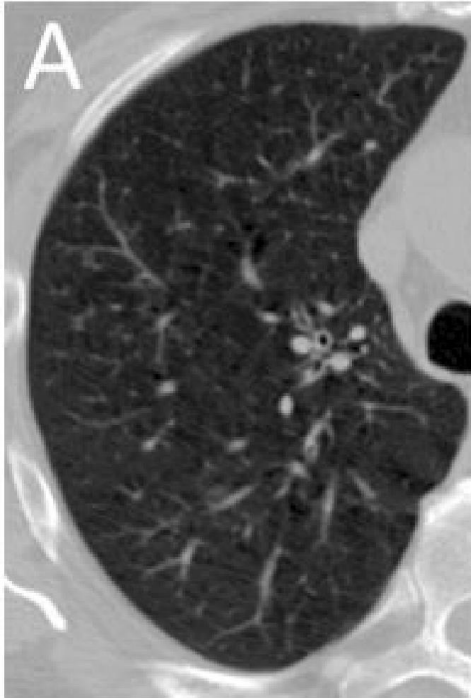
# Most Common Question:

---

What is Sybil “seeing”?



# What is Sybil Seeing?



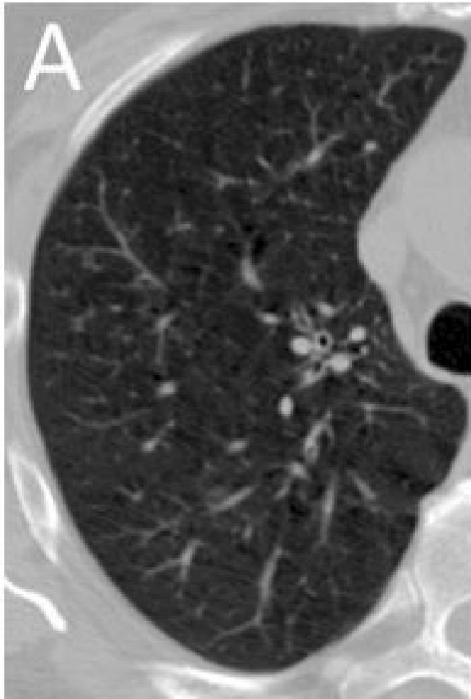
69-year-old male with  
99 pack-year smoking hx

Baseline scan read by  
radiologist as “negative  
screen, minor abnormalities  
not suspicious for lung  
cancer”

Sybil placed scan in 75%  
risk percentile (6-year risk)



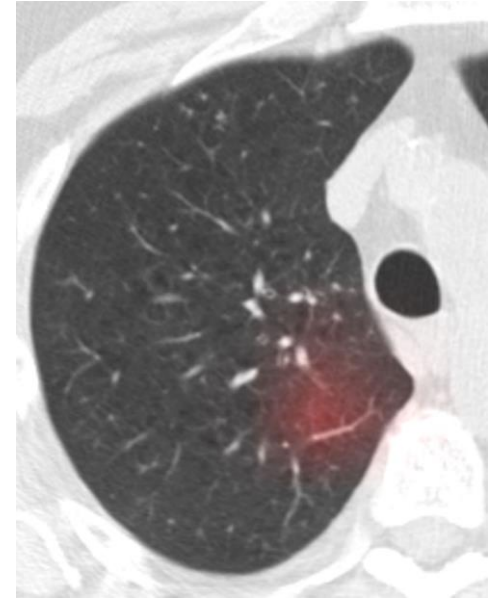
# What is Sybil Seeing?



69-year-old male with  
99 pack-year smoking hx

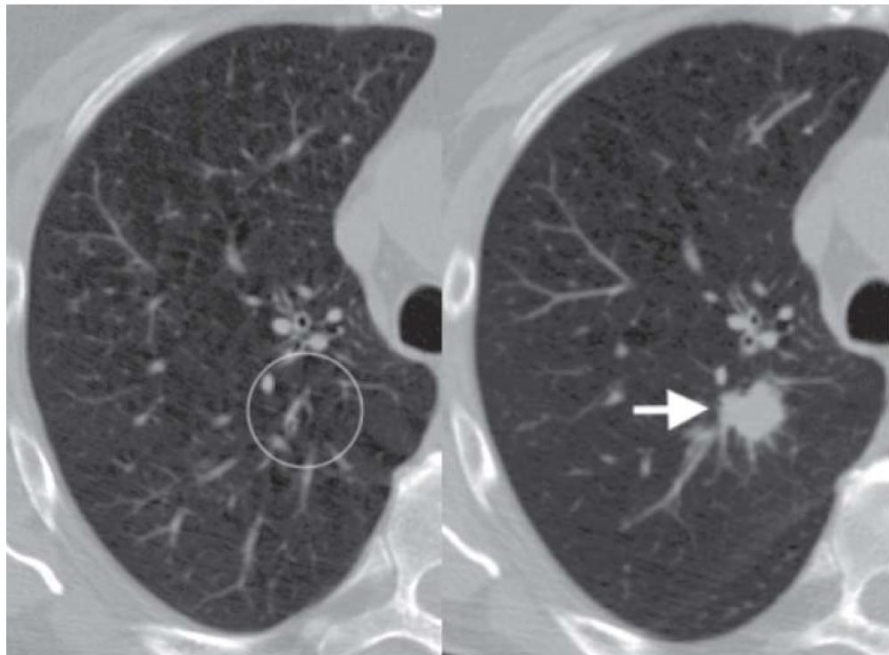
Baseline scan read by  
radiologist as “negative  
screen, minor abnormalities  
not suspicious for lung  
cancer”

Sybil placed scan in 75%  
risk percentile (6-year risk)



**Sybil “attention map”**  
(note this is *not* a PET scan)

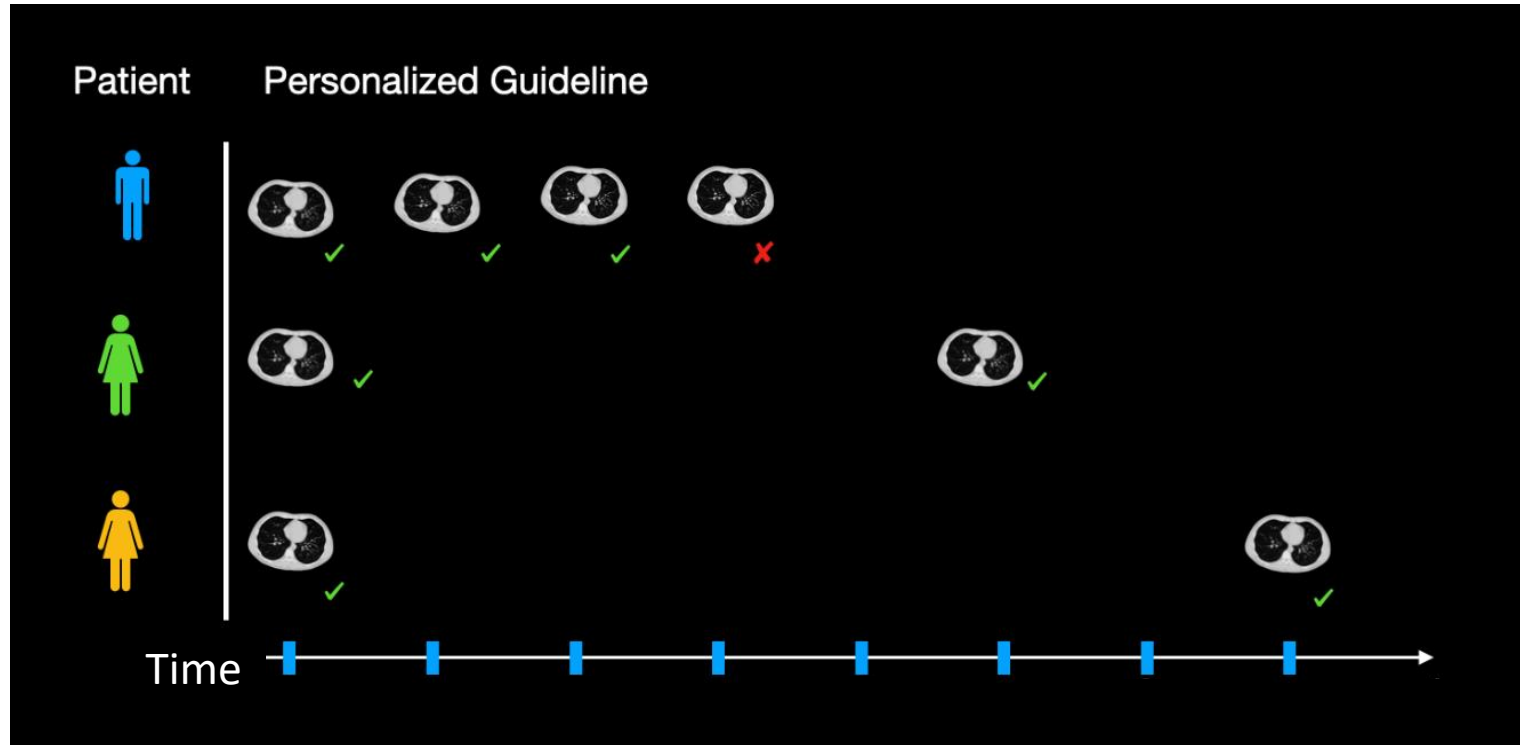
# What is Sybil Seeing?



- The following year, a worrisome nodule appeared in the location Sybil was focused on for risk assessment.
- Pt had surgery for a 2.2 cm poorly-differentiated squamous cell lung cancer (pT1cN0)
- A “win” for lung cancer screening in a trial w/ high adherence, but in the real world, adherence is only 25%



# Personalized Screening Strategies



# Thank you

